

TNCM/SXM

JEPPesen

ST MAARTEN I, NETH ANTILLES
(PHILIPSBURG)

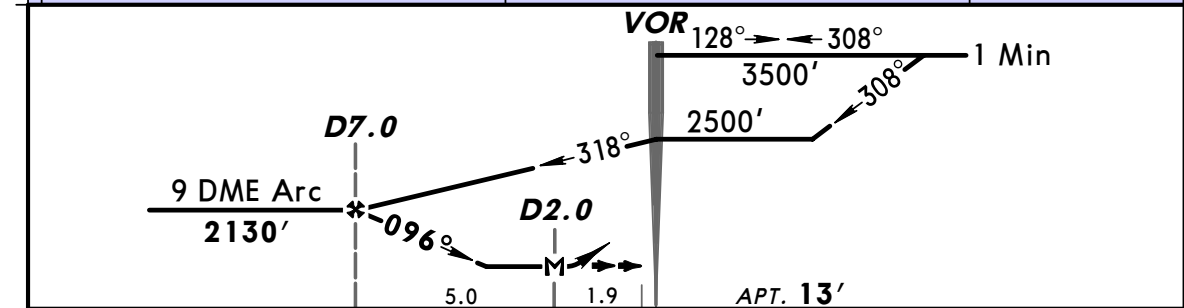
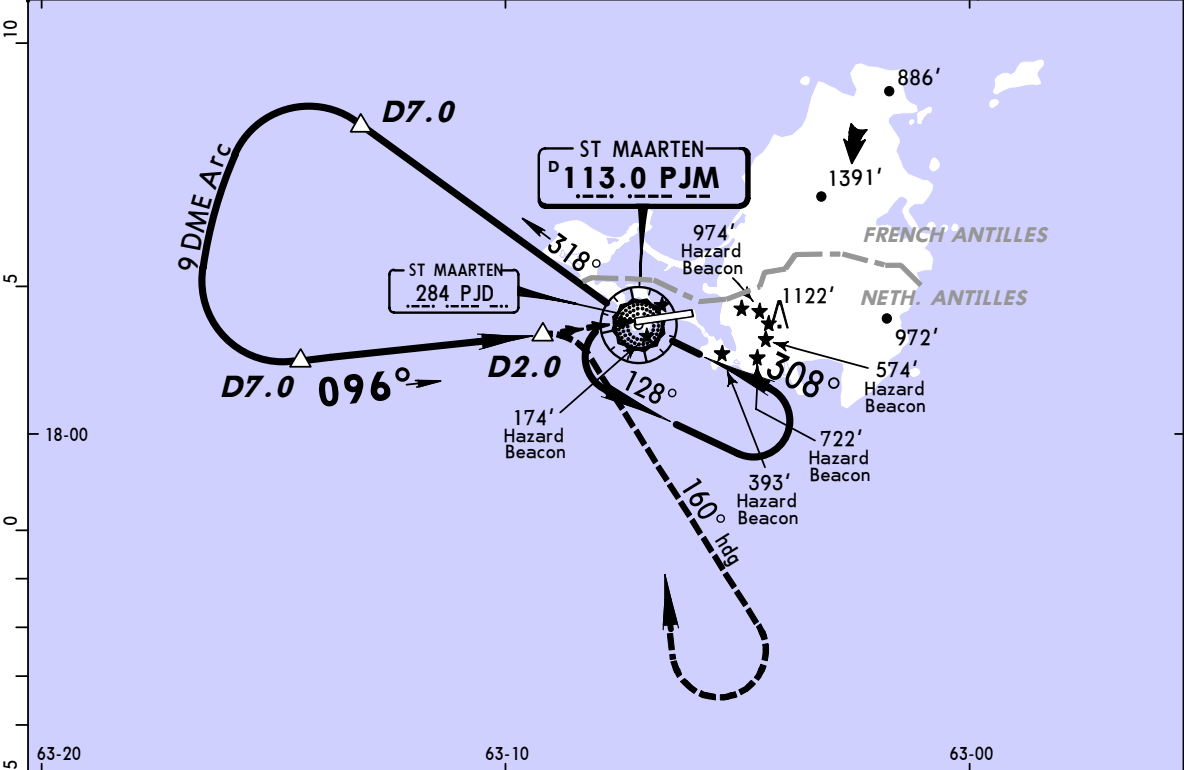
PRINCESS JULIANA INTL

18 JUL 03 (13-1)

VOR DME Rwy 09

BRIEFING STRIP™

*JULIANA Approach				*JULIANA Tower	
128.95				118.7	
VOR PJM 113.0	Final Apch Crs 096°	Minimum Alt D7.0 2130' (2117')	MDA(H) 600' (587')	Apt Elev 13'	
MISSED APCH: Turn RIGHT to 160° heading, climb to 1500' within D10.0, then turn RIGHT, return to PJM VOR climbing so as to reach the VOR at or above 2500'.					
Alt Set: hPa Apt Elev: 0 hPa Trans level: FL 65 Trans alt: 5000' 1. Landing Rwy 27 at night prohibited, VMC by day. 2. Final approach track is offset 3° from runway centerline.					



Gnd speed-Kts	70	90	100	120	140	160	REIL PAPI-L		160° hdg	
Descent Gradient 5.0%	355	456	507	608	709	811				
MAP at D2.0										

STRAIGHT-IN LANDING RWY 09						CIRCLE-TO-LAND					
MDA(H) 600' (587')											

PANS OPS	A	4500m	A	NA
	B		B	
	C		C	
	D		D	

CHANGES: See other side.

© JEPPESEN SANDERSON, INC., 2000, 2003. ALL RIGHTS RESERVED.

TNCM/SXM

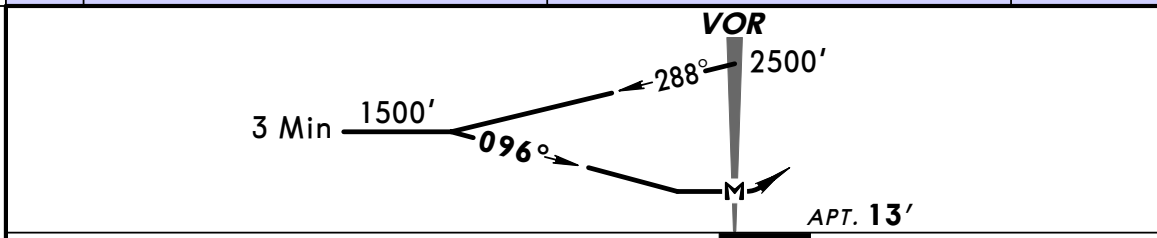
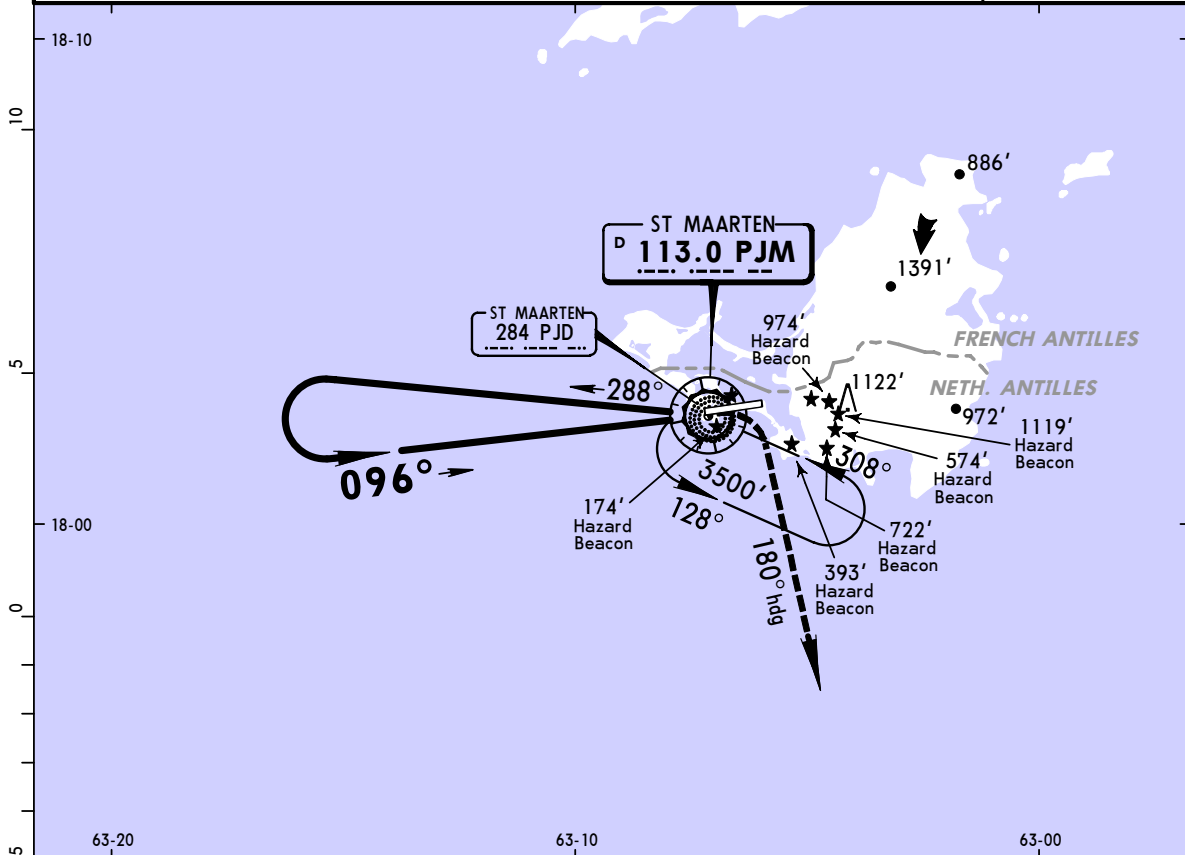
JEPPESEN ST MAARTEN I, NETH ANTILLES
(PHILIPSBURG)

20 JUN 03 (13-2)

PRINCESS JULIANA INTL

CAT A & B **VOR Rwy 09**

*JULIANA Approach 128.95			*JULIANA Tower 118.7		
VOR PJM 113.0	Final Apch Crs 096°	No FAF	MDA(H) Refer to Minimums	Apt Elev 13'	
MISSED APCH: Turn RIGHT to heading 180° climbing to 1500' within 10 NM. Return to PJM VOR so as to reach the VOR at or above 2500'.					<p>MSA PJM VOR</p>
Alt Set: hPa Apt Elev: 0 hPa Trans level: FL 65 Trans alt: 5000' 1. Landing Rwy 27 at night prohibited, VMC by day. 2. Final approach track is offset 3° from runway centerline.					



					REIL PAPI-L	1500'	to	180° hdg
MAP at VOR								

STRAIGHT-IN LANDING RWY 09				CIRCLE-TO-LAND			
MDA(H) CAT A: 470' (457') CAT B: 630' (617')							

PANS OPS	A	4500m	A	NA
	B		B	
	C	C		
	D	D		
NOT APPLICABLE				

CHANGES: New chart format.

© JEPPESEN SANDERSON, INC., 2003. ALL RIGHTS RESERVED.

TNCM/SXM

JEPPESEN ST MAARTEN I, NETH ANTILLES
(PHILIPSBURG)

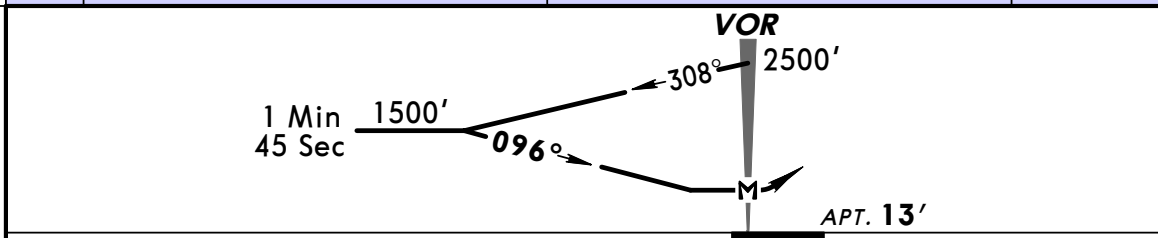
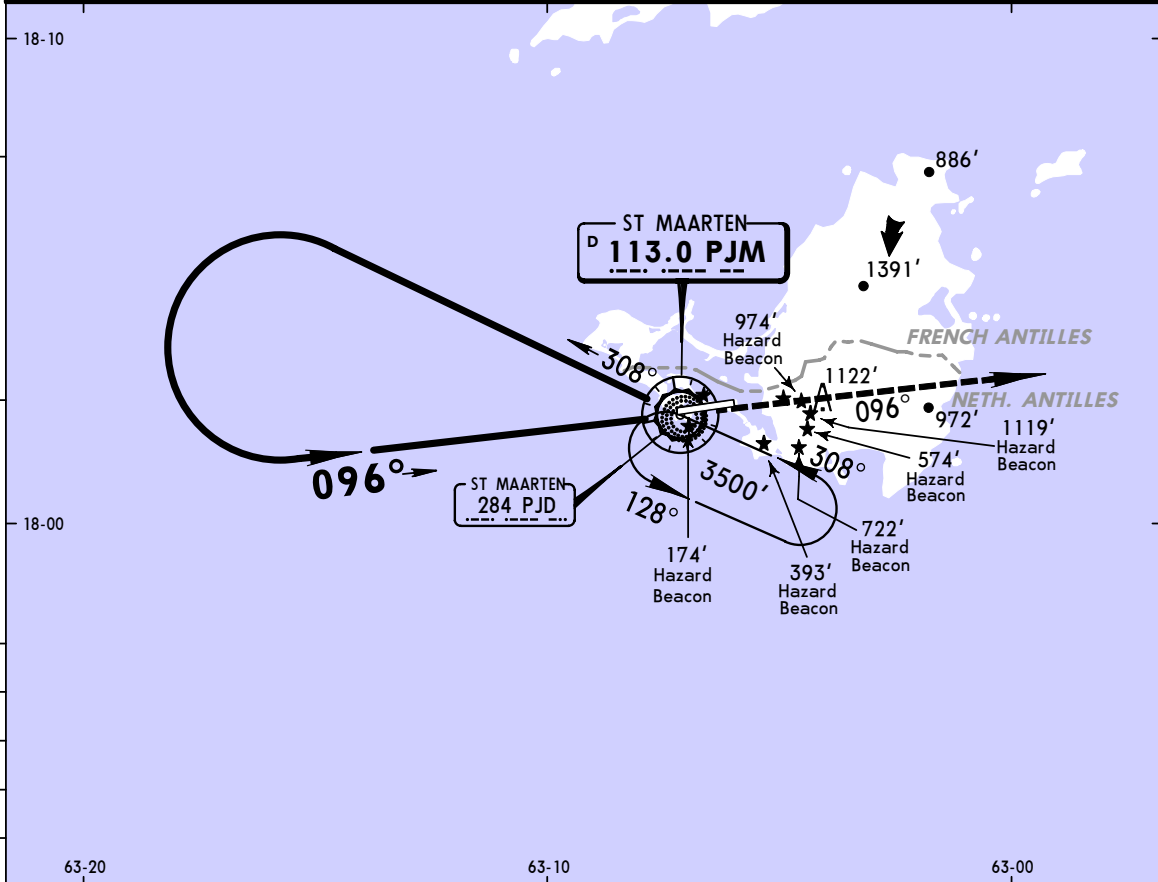
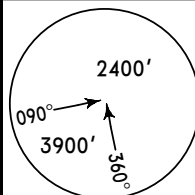
20 JUN 03 (13-3)

PRINCESS JULIANA INTL

CAT C & D **VOR Rwy 09**

BRIEFING STRIP™

*JULIANA Approach 128.95			*JULIANA Tower 118.7		
VOR PJM 113.0	Final Apch Crs 096°	No FAF	MDA(H) Refer to Minimums	Apt Elev 13'	
MISSED APCH: Climb STRAIGHT AHEAD on 096° to 2500' within 10 NM. Then return to the PJM VOR.					
Alt Set: hPa Apt Elev: 0 hPa Trans level: FL 65 Trans alt: 5000' 1. Landing Rwy 27 at night prohibited, VMC by day. 2. Final approach track is offset 3° from runway centerline.					



					REIL PAPI-L	2500' ↑ on 096°
MAP at VOR						

STRAIGHT-IN LANDING RWY 09				CIRCLE-TO-LAND		
MDA(H) CAT C: 950' (937') CAT D: 970' (957')						

PANS OPS

A	NOT APPLICABLE	A	
B		B	
C		C	NA
D	4500m	D	

CHANGES: New chart format.

© JEPPESEN SANDERSON, INC., 2003. ALL RIGHTS RESERVED.

TNCM/SXM

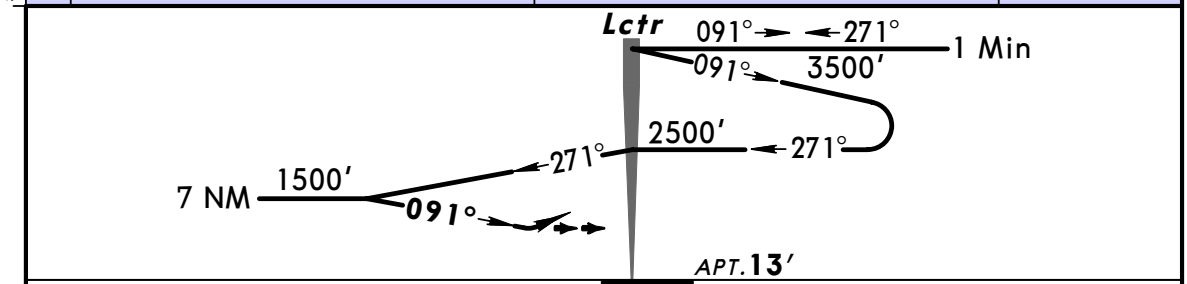
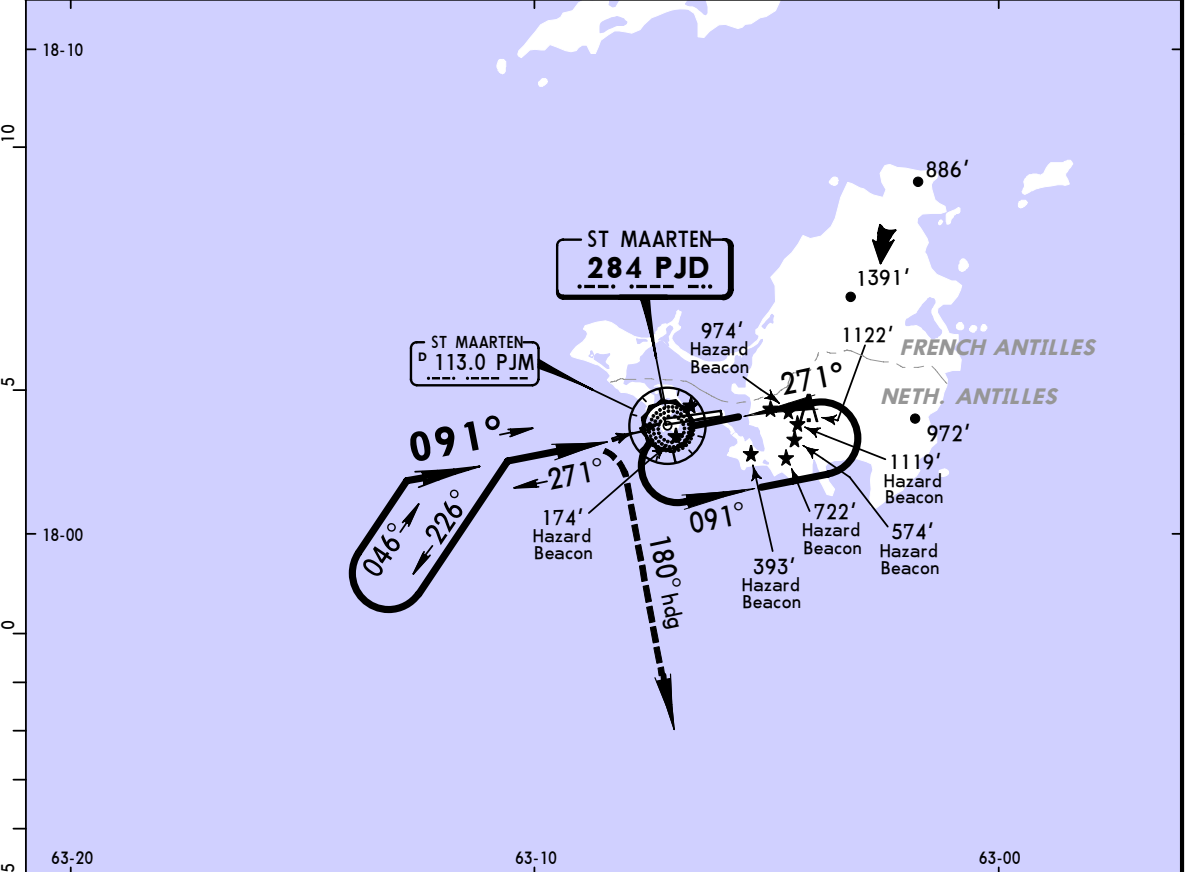
JEPPESEN ST MAARTEN I, NETH ANTILLES
(PHILIPSBURG)

20 JUN 03 (16-1)

PRINCESS JULIANA INTL

LOCATOR Rwy 09

*JULIANA Approach 128.95			*JULIANA Tower 118.7		
LCTR PJD 284	Final <i>Apch Crs</i> 091°	No FAF	MDA(H) 620' (607')	Apt Elev 13'	
MISSED APCH: Upon reaching MDA(H) immediately turn RIGHT climbing on 180° heading to 1500' within 10 NM, return to reach PJD Lctr at 2500'.					
Alt Set: hPa Apt Elev: 0 hPa Trans level: FL 65			Trans alt: 5000'		
1. Landing Rwy 27 at night prohibited, VMC by day.					MSA PJD Lctr

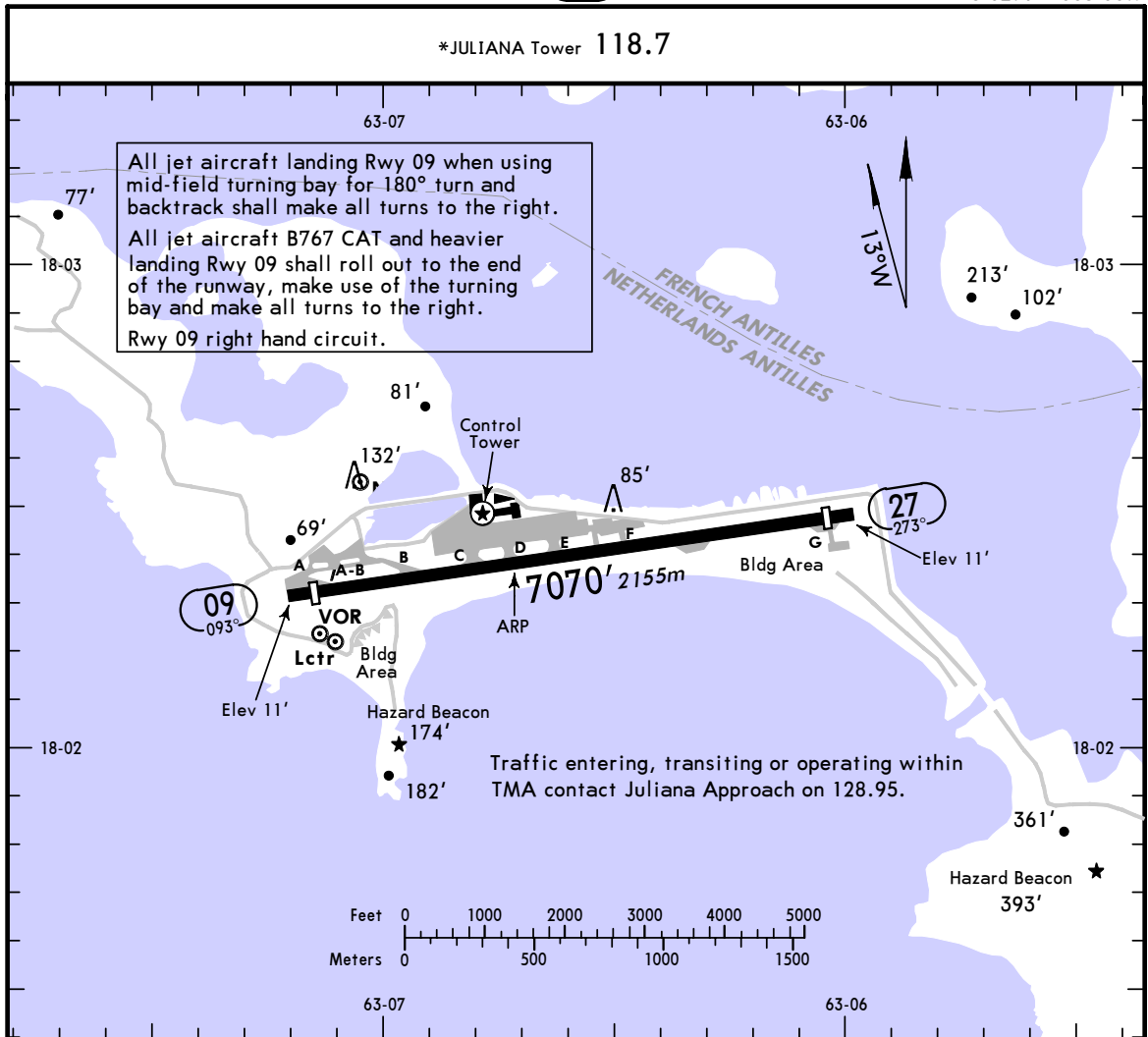


					REIL PAPI-L		1500'	to	180° hdg

STRAIGHT-IN LANDING RWY 09					CIRCLE-TO-LAND				
MDA(H) 620' (607')									

PANS OPS	A	4500m	A	NA
	B		B	
	C		C	
	D		D	

*JULIANA Tower 118.7



All jet aircraft landing Rwy 09 when using mid-field turning bay for 180° turn and backtrack shall make all turns to the right.
 All jet aircraft B767 CAT and heavier landing Rwy 09 shall roll out to the end of the runway, make use of the turning bay and make all turns to the right.
 Rwy 09 right hand circuit.

ADDITIONAL RUNWAY INFORMATION

RWY		USABLE LENGTHS			
		LANDING BEYOND		TAKE-OFF	WIDTH
		Threshold DAY	NIGHT		
09	MIRL REIL PAPI-L (angle 3.0°)	6742' 2055m			148'
27	MIRL	① 6742' 2055m	NA	6824' 2080m	45m

① VMC only.

TAKE-OFF	
Rwy 27	Rwy 09
	Right Hand Turn MANDATORY. Hazard Beacons on Hills to the East Must be Visible
1 & 2 Eng	
3 & 4 Eng	
300' - 4500m	1200' - 4500m